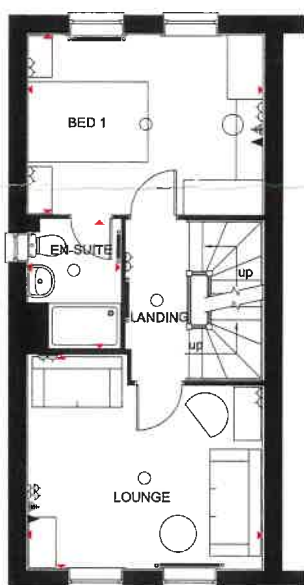


## Ground Floor

Family/ Dining Room	4937 x 3938mm	13'0" x 12'11"
Kitchen	3060 x 1868mm	10'0" x 6'2"
WC	1649 x 861mm	5'5" x 2'10"
Bed 4/Study	2813 x 1868mm	9'3" x 6'2"

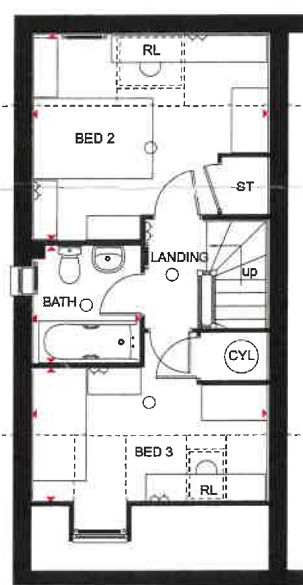
(Approximate dimensions)



## First Floor

Bedroom 1	3938 x 3032mm	12'11" x 9'11"
En Suite	2163 x 1551mm	7'1" x 5'1"
Lounge	3938 x 3633mm	12'11" x 11'11"

(Approximate dimensions)



## Second Floor

Bedroom 2	3938 x 3483mm	12'11" x 11'5"
Bedroom 3	3938 x 2250mm	12'11" x 7'5"
Bathroom	1962 x 1801mm	6'5" x 5'11"

(Approximate dimensions)

### KEY

- Light fitting
- ◡ Electric socket
- ◀ Telephone outlet point

- ⦿ T.V. aerial socket
- Radiator
- B Boiler

- wm Washing machine space
- dw Dishwasher space
- f/f Fridge/freezer space

- RL Roof light
- ◀▶ Dimension location

[barratthomes.co.uk](http://barratthomes.co.uk)